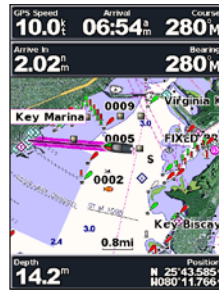
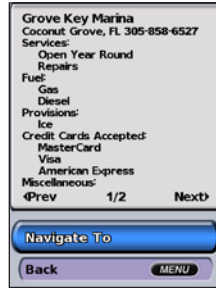


**To find a marine service from your current location:**

1. From the Home screen, select **Where To**.
2. Select the marine service category to which you want to navigate. The unit shows the list of the 50 nearest locations and the distance to each.
3. Select the marine service item to which you want to navigate. A screen containing information about the selected marine service appears.
4. Select **Navigate To**.
5. Select **Go To** or **Route To**.



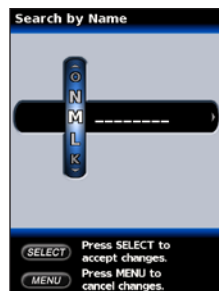
- OR
- Select **Guide To** when using a preprogrammed BlueChart g2 Vision card to use Auto Guidance.
6. Follow the colored line on the screen to the destination.

**To stop navigating:**

Press **MENU**, and then select **Stop Navigating**.

**To search for a destination by name:**

1. From the Home screen, select **Where To > Search by Name**.
2. Press up or down on the **ROCKER** to select a number or character; press left or right to move fields.
3. Press **SELECT** to view the 50 nearest destinations that contain your search criteria.



When you create a waypoint, you can designate it as an MOB (Man OverBoard). This marks the point and sets a course back to the marked location. When an MOB is active, an MOB waypoint with an international MOB symbol is created and the unit is on an active navigation to that point.

**To mark your location:**

1. From any screen, press **MARK**.
2. Select **Back** to return to the chart, or select **MOB** (Man OverBoard) to designate the waypoint as an MOB point.

**To create a new waypoint:**

1. Move the map pointer to the location you want and press **SELECT**.
2. Select **Create Waypoint**.
3. Select one of the following:
  - **Edit Waypoint**—customize the waypoint attributes.
  - **Delete**—delete the waypoint.
  - **Navigate To**—go to the waypoint.
  - **Back**—return to the navigation chart.



**To edit a waypoint:**

1. Create a new waypoint or select a waypoint on the navigation chart.
2. Select **Edit Waypoint**.
3. Select the waypoint attribute you want to change (**Name, Symbol, Depth, Water Temp, or Position**).



**To move the waypoint on the navigation chart:**

Select **Edit Waypoint > Position > Use Chart**.

**To view a list of all waypoints:**

From the Home screen, select **Information > User Data > Waypoints**.

Please visit [www.garmin.com](http://www.garmin.com) for additional documentation and information.

# GPSMAP® 400/500 Series

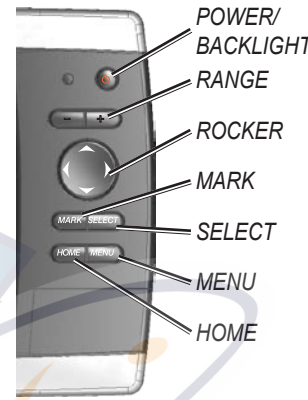
## quick reference guide



Press and hold the **POWER** key until the unit beeps and the Garmin screen appears. When the Warning screen appears, press **SELECT** to open the Home screen.



Home Screen



**POWER/BACKLIGHT**—Press and hold to turn the unit on or off; press and release to adjust the backlight and day/night modes.

**RANGE (-/+)**—Press to adjust the range of the sonar; zoom in or out on a chart.

**ROCKER**—Press up, down, left, or right to move through menus, highlight fields, and enter data.

**MARK**—Press to mark a waypoint or MOB.

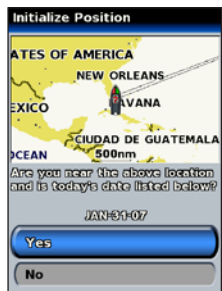
**SELECT**—Press to select highlighted items and confirm on-screen messages.

**HOME**—Press to return to the Home screen.

**MENU**—Press to access additional settings and configuration options; press to return to the previous screen when indicated.

**Acquiring GPS Satellite Signals**

When you turn on the unit, the GPS receiver must collect satellite data and establish its current location. If the unit cannot establish a location, the Initialize Position screen appears.



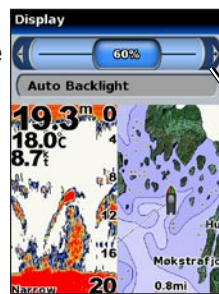
Initialize Position screen appears.

When the unit acquires satellite signals, the signal strength bars at the top of the Home screen are green. When the unit loses satellite signals, the green bars disappear.

**Adjusting the Backlight**

**To adjust the backlight level:**

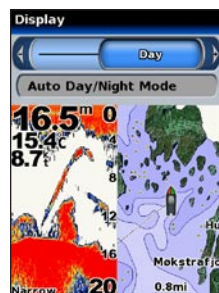
1. While the unit is on, press and release the **POWER** key.
2. Select **Backlight > Manual Backlight**.



Press left or right on the **ROCKER** to manually adjust the backlight.

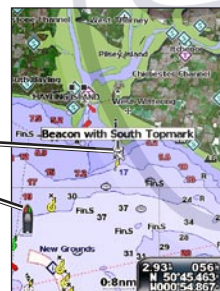
**To switch between Day and Night mode:**

1. Press and release the **POWER** key.
2. Select **Day/Night Mode**.
3. Press left or right on the **ROCKER** to switch between modes.



**Panning the Navigation Chart**

Use the map pointer to pan away from your current location and scroll to other areas on the navigation chart. As you pan past the edge of the current map display, the screen scrolls forward to provide continuous map coverage. The position icon stays at your present location.



Map pointer  
Position icon

As you move the map pointer, you can view the distance and bearing from your current location, and the map pointer's location coordinates in the lower-right corner of the map.

To pan the map, press up, down, right, or left on the **ROCKER**.

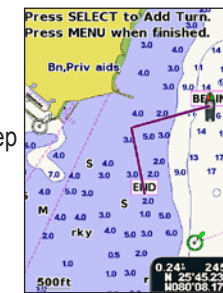
To stop panning, press **MENU**, and then select **Stop Panning**.

**Zooming In and Out on the Map**

The **Range (+/-)** keys control the zoom level, indicated by the scale at the bottom of the navigation chart (120m). The bar under the number represents that distance on the map.

**To create a route from your present location:**

1. Move the map pointer to a destination, and press **SELECT**.
2. Select **Navigate To > Route To**.
3. Use the **ROCKER** to add a turn, and press **SELECT**. Repeat this step to add additional turns.
4. Press **MENU** to cancel or to begin navigating the route.



**To create a route in another location:**

1. From the Home screen, select **Information > User Data > Routes > New Route**.
2. Use the **ROCKER** to select the route's starting point, and press **SELECT**.
3. Use the **ROCKER** and **SELECT** keys to add additional turns.
4. Press **MENU** to cancel, edit, or navigate the route.



**To edit a route**

1. From the Home screen, select **Information > User Data > Routes**.
2. Select the route to edit.
3. Select **Edit Route**. You can edit the route name, turns, or delete the route.

